

Dual Language Programs

March 11, 2024

Jonathan Blackmore, Ed.D.
Assistant Superintendent of Educational Services

Andrea Katanic, Ed.D.
Director of Curriculum and Instruction

Covina-Valley Programs

Spanish Dual Language (90/10 gradually decreasing to 50/50 by grade 5)

- Manzanita Elementary School - Las Palmas Middle School - Northview High School (2025-26)
- ★ Beginning instruction with a high percentage (90%) of time spent in Spanish allows students to develop a strong foundation in that language. Many skills transfer from Spanish to English delivering many other cognitive benefits like cross-linguistic connections, higher executive functioning and improved problem solving abilities.
- ★ A strong emphasis in Spanish allows students to build cultural competence and a sense of identity with their heritage language and culture. This can foster pride and positive attitudes toward cultural and linguistic diversity.
- ★ Dual language immersion programs aim to provide educational equity by offering bilingual education opportunities to all students, regardless of their linguistic background. The 90/10 model ensures that students receive sufficient exposure to the Spanish, particularly those who may not have access to it outside of school.
- This model is an educational approach designed to promote bilingualism and biliteracy in both Spanish and English. In this model, instruction is divided between two languages, with the majority of instruction delivered in Spanish (the target language) during the early grades, gradually shifting to an equal distribution of both languages by the upper elementary grades.

Covina-Valley Programs

Mandarin Dual Language (50/50)

- Mesa Elementary School - Sierra Vista Middle School - South Hills High School
- ★ 50/50 immersion programs provide students with a balanced exposure to both English and Mandarin, aiming for balanced bilingualism and biliteracy.
- ★ 50/50 immersion ensures that students develop strong proficiency in both languages, which can be advantageous in various academic, social, and professional contexts.
- ★ Mandarin is not a Latin-based language, and has different linguistic characteristics than English.
- ★ Mandarin is a member of the Sino-Tibetan language family, characterized by tonal pronunciation and logographic writing system. Mandarin uses Chinese characters (Hanzi) as its writing system, which requires memorization of thousands of characters.
- ★ Mandarin is a tonal language, which means that the pitch or tone of a syllable can change its meaning. This can be challenging for learners who are not accustomed to tonal languages.
- The decision to implement a 50/50 Mandarin/English immersion model was based on a holistic approach to bilingual education rather than solely on linguistic considerations. The effectiveness of the Mesa immersion model is in part due to program design, instructional quality, support for language learning, and the specific needs of the students and community.

Our students will...

Be bilingual

Be biliterate

Be bicultural

Be ready for the future!



Program Goals

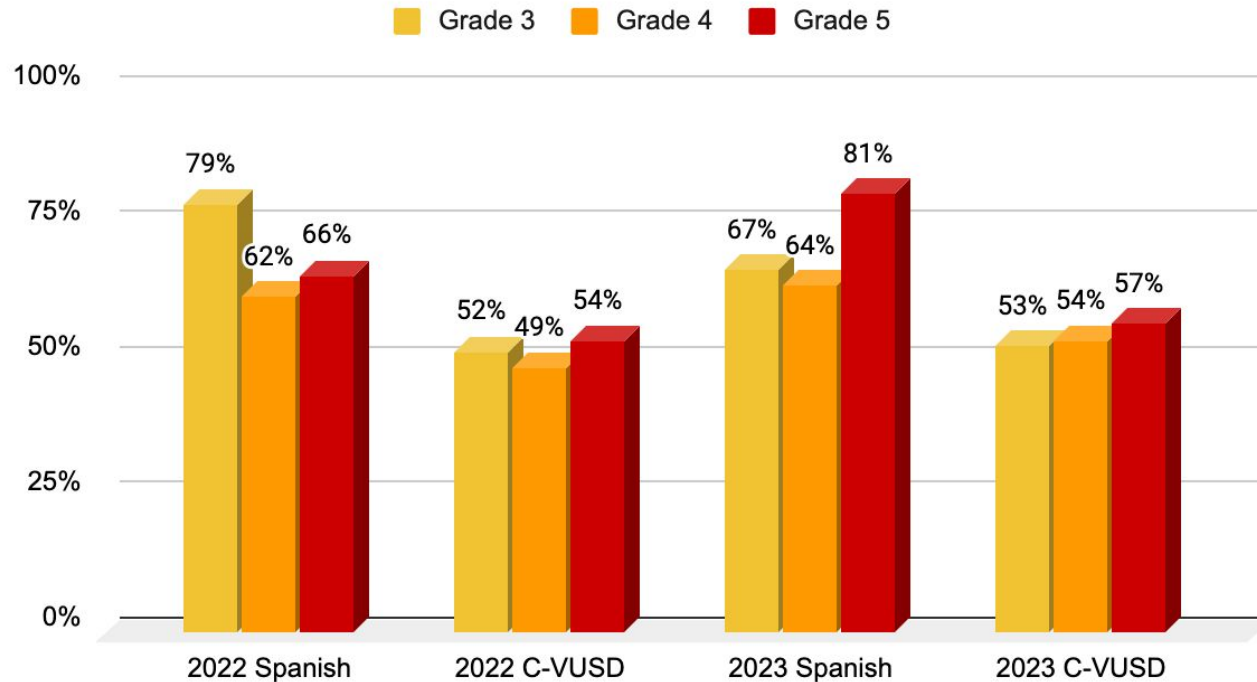
- Use two languages comfortably and effectively, appropriate for age and grade level
- Communicate effectively through reading and writing in two languages at a level appropriate for their age and grade level
- Perform academically at grade level or above their monolingual English speaking peers
- Demonstrate an appreciation of cultural diversity and cross-cultural competence across a variety of social situations

Research-Based

- “Two-language instruction is best for English-language learners.” (Stanford Center for Education Policy Analysis, 2015)
- “Dual Language studies have shown that students in such programs perform as well as or better than their peers in core content areas such as English language arts, mathematics, and science.” (RAND Corporation, 2017)
- “Dual language education promises to give students access to key 21st century skills—namely bilingualism, biliteracy, and global awareness.” (American Institutes for Research, 2015)

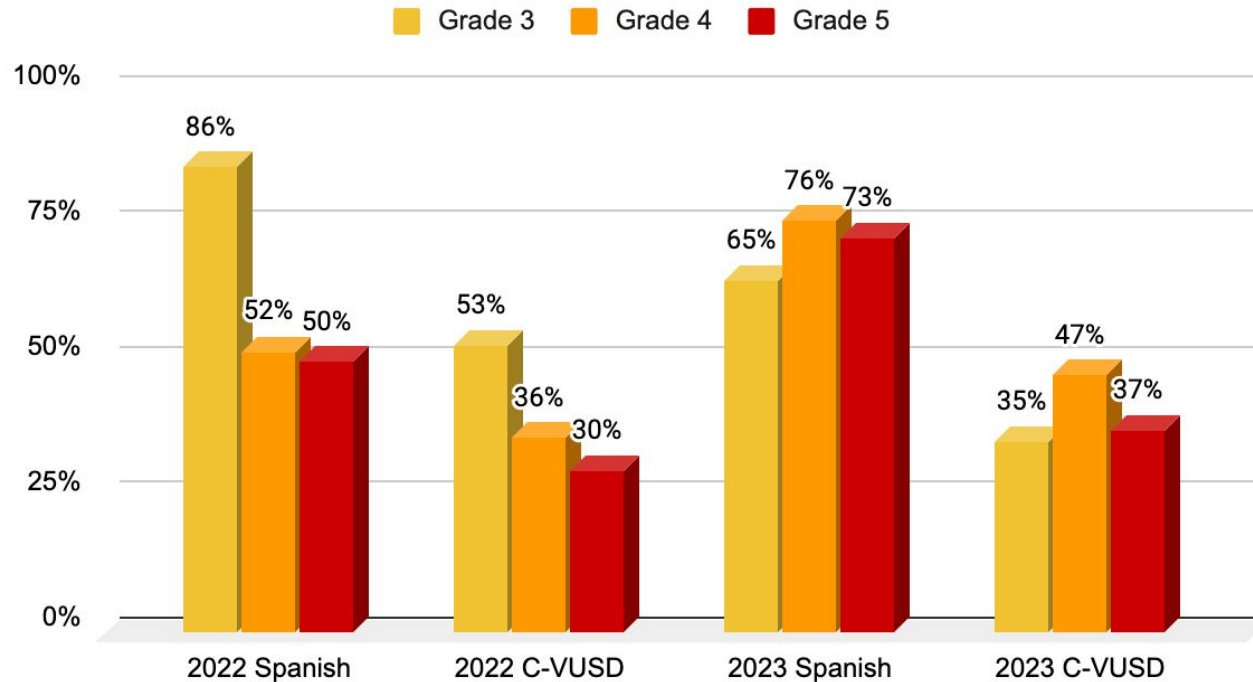
CAASPP/SBAC Proficiency 2022 and 2023 Spanish Dual Achievement Data - ELA

ELA Spanish



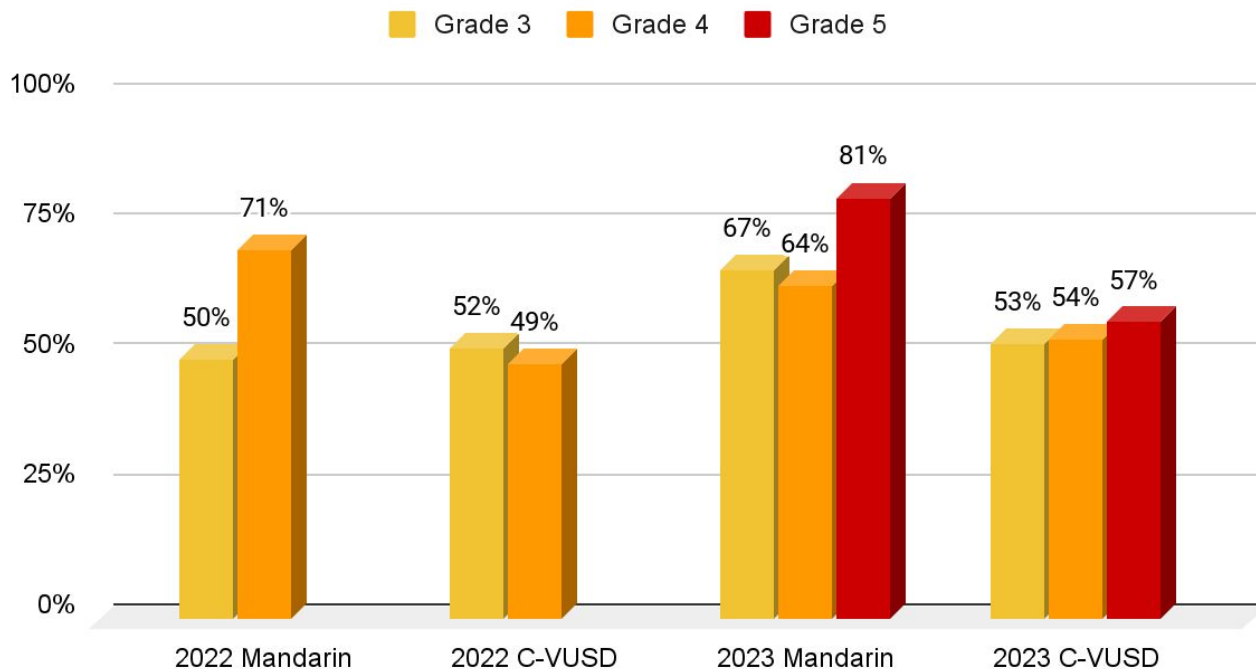
CAASPP/SBAC Proficiency 2022 and 2023 Spanish Dual Achievement Data - Math

Math Spanish



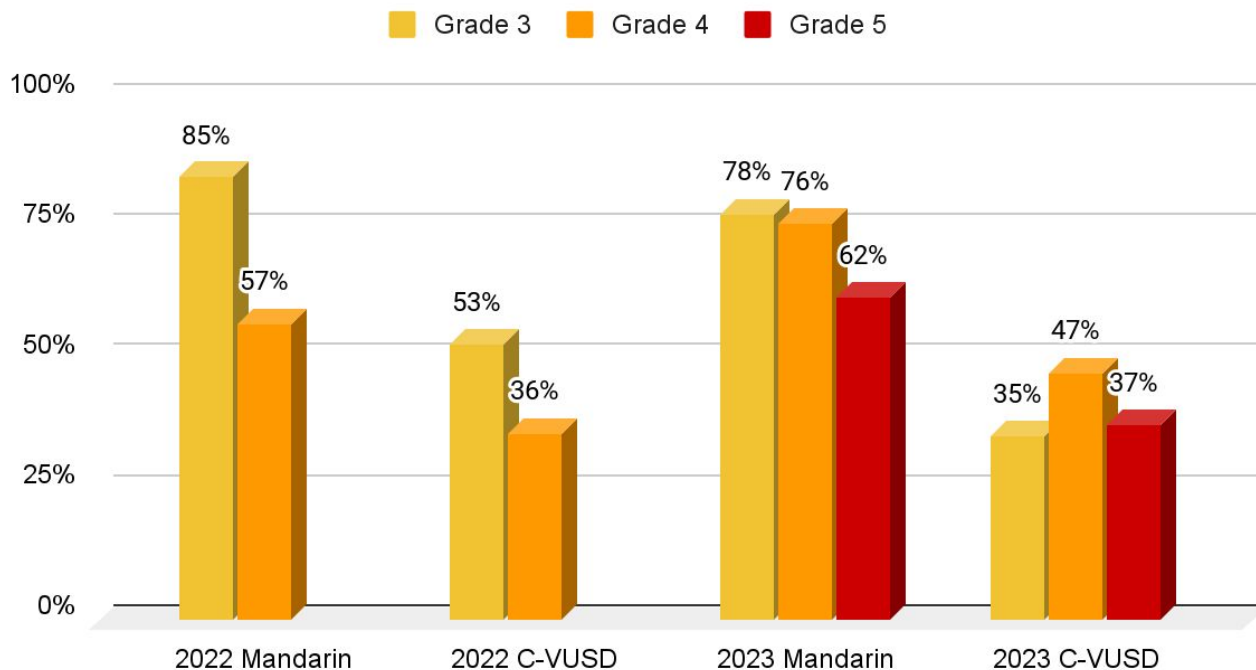
CAASPP/SBAC Proficiency 2022 and 2023 Mandarin Dual Achievement Data - ELA

ELA Mandarin



CAASPP/SBAC Proficiency 2022 and 2023 Mandarin Dual Achievement Data - Math

Math Mandarin



Implementation Timeline Spanish

Manzanita Elementary	Year	Las Palmas Middle School	Year
Kindergarten	2016-17	6th	2022-23
1st	2017-18	7th	2023-24
2nd	2018-19	8th	2024-25
3rd	2019-20		
4th	2020-21		
5th	2021-22		

Elementary School:

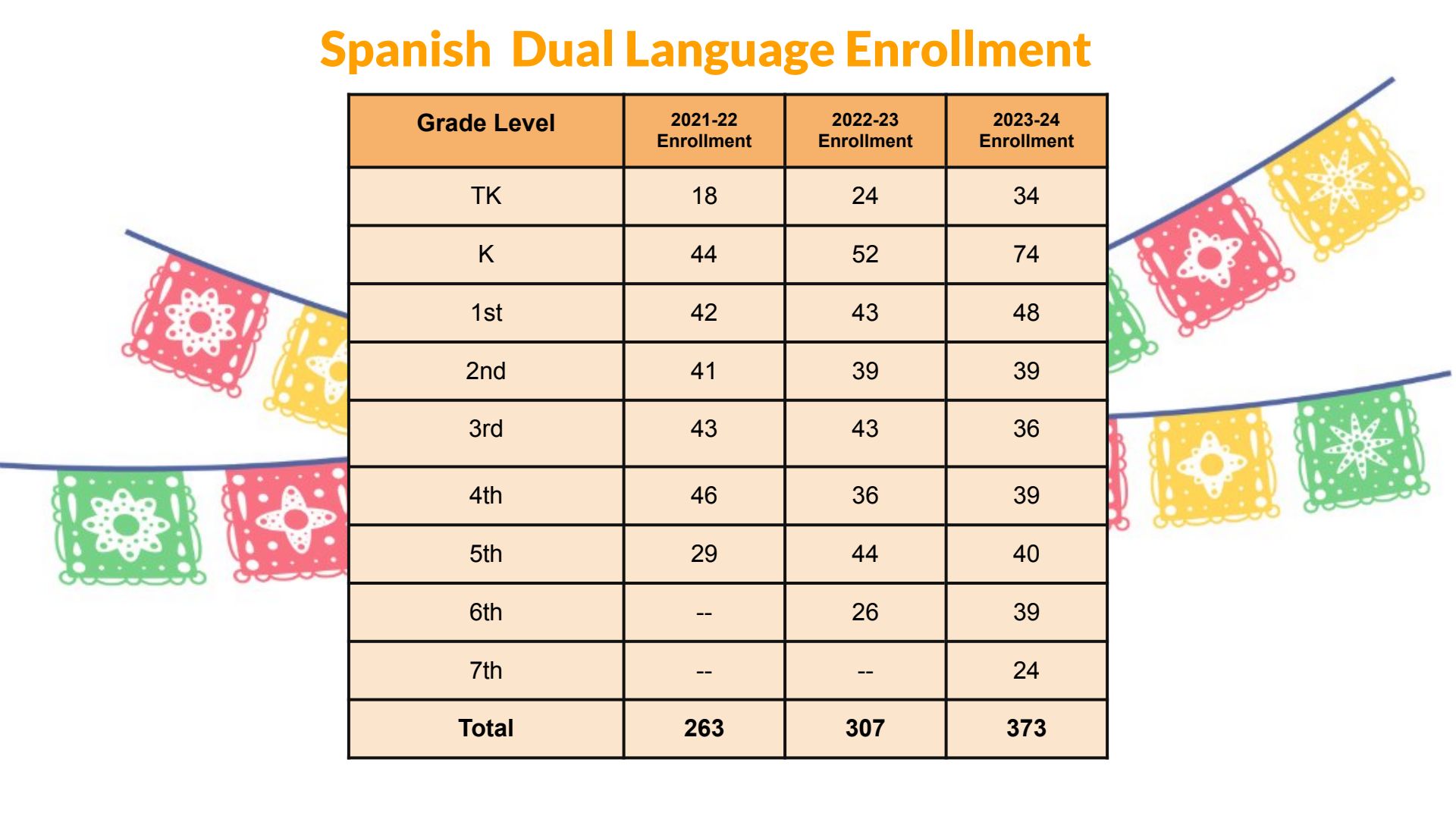
- 90/10 Model (transitions to 50/50 by 5th grade)

Middle School:

- 1 period of Spanish Language (equivalent to high school level Spanish for Spanish Speakers-grades 7 and 8)
- 1 period of Pre AP Spanish (high school level-grade 8)
- 1 period of History taught in Spanish (grades 7 and 8)

★ Middle School Seal of Bi-Literacy Awards

Spanish Dual Language Enrollment



Grade Level	2021-22 Enrollment	2022-23 Enrollment	2023-24 Enrollment
TK	18	24	34
K	44	52	74
1st	42	43	48
2nd	41	39	39
3rd	43	43	36
4th	46	36	39
5th	29	44	40
6th	--	26	39
7th	--	--	24
Total	263	307	373

Spanish Curriculum

Elementary

Spanish Language Arts: Maravillas

English Language Arts: Wonders

Math: Pearson/UCI Math (English)

Social Studies: Studies Weekly (Spanish)

Science: *Currently in adoption process

Middle School Course Sequence

Grade 6: 1 period Spanish Language/1 period History (taught in Spanish)

Grade 7: 1 period Spanish Language/1 period History (taught in Spanish)

Grade 8: 1 period Pre-AP Spanish

High School Program-Spanish

- Option to Learn a Third Language
- Advanced Language Courses as Electives
- AP Spanish Language
- AP Spanish Literature
- Dual Enrollment Spanish
- High School Seal of Biliteracy In Spanish or Another Language

Implementation Timeline Mandarin

Manzanita Elementary	Year	Las Palmas Middle School	Year
Kindergarten	2016-17	6th	2022-23
1st	2017-18	7th	2023-24
2nd	2018-19	8th	2024-25
3rd	2019-20		
4th	2020-21		
5th	2021-22		

Elementary School:

- 50/50 Model

Middle School:

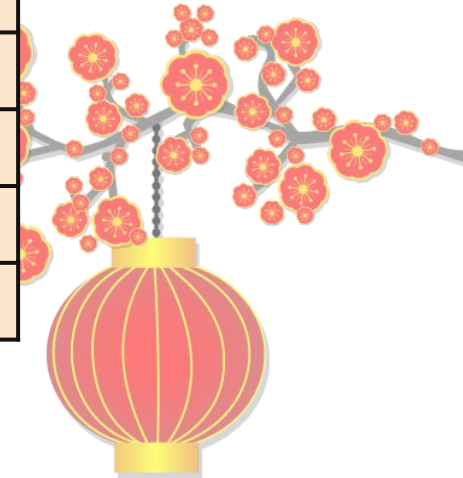
- 1 period of Chinese Language (equivalent to high school level Chinese)
- 1 period of an elective of their choice in English

★ Middle School Seal of Bi-Literacy Awards

Mandarin Dual Language Enrollment



Grade Level	2021-22 Enrollment	2022-23 Enrollment	2023-24 Enrollment
TK	17	24	22
K	36	52	42
1st	42	35	49
2nd	51	43	33
3rd	26	45	41
4th	21	25	42
5th	--	22	22
6th	--	--	11
Total	193	246	262



Mandarin Curriculum

Elementary

Mandarin Language Arts: Better Immersion

English Language Arts: Wonders

Math: Pearson/UCI Math (English and Mandarin)

Social Studies: Studies Weekly (English)

Science: *Currently in adoption process

Middle School

Chinese 1 (high school level)

Chinese 2 (high school level)

Chinese 3 (high school level)

Optional Electives (AVID, Band, Arts, Leadership)

High School Program- Mandarin

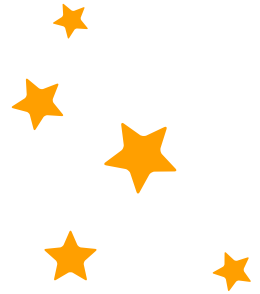
- Option to Learn a Third Language
- Advanced Elective Language Courses
- AP Chinese Language
- IB Chinese A (SL) and IB Chinese B (HL)
- Dual Enrollment Mandarin
- Seal of Biliteracy in Mandarin or Another Language

Opportunities Await!

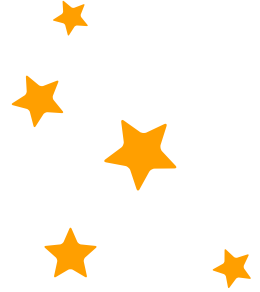
- Seal of Biliteracy on High School Diploma
- Advanced Placement/College Credit
- Dual language education promises to give students access to key 21st century skills—namely bilingualism, biliteracy, and global awareness (Office of English Language Acquisition, 2015)
- Fluent bilinguals hold higher occupational prestige in their jobs and confirmed that bilingualism has direct and positive impact on earnings (Rumbaut, 2014)
- The demand for bilingual employees who speak Spanish, Chinese, and Arabic has increased, particularly in the finance, healthcare, legal services, and customer service sectors (New American Economy, 2015)
- Bilingual Job Opportunities
 - *Healthcare
 - *Education
 - *Social services
 - *Communication
 - *Hospitality
 - *Law enforcement
 - *Finance
 - *And Much More

Next Steps

- New Staff
 - 2nd Grade Mandarin Teacher
- Middle School Mandarin Growth
- Community Outreach and Communication
- Maintain or Increase Program Growth



Community Outreach and Marketing



The background features a vibrant orange-to-red gradient. On the right side, there are several overlapping, curved, semi-transparent shapes in lighter shades of orange and red, creating a dynamic, layered effect.

Thank You